

# CT Liver Analysis

## LIVER SEGMENTATION FOR RESECTION PROPOSAL

With a wizard-type user interface design, users perform high-precision auto segmentation of the liver parenchyma, and segmentation of vascular structures and lesions that are discerned through 3D registration of arterial, portal and venous CT phases. All segmentations are stored as individual volumes that are color-coded and can be superimposed in any combination.

Select a resection point on the Portal Vein to visualize and quantify the tissue to be resected as a result - or choose points on both the Portal and Hepatic veins, visualizing the intersecting tissues affected -- or draw a Cantlie line and see the volumes of residual and resected tissue that result.

Cardiovascular

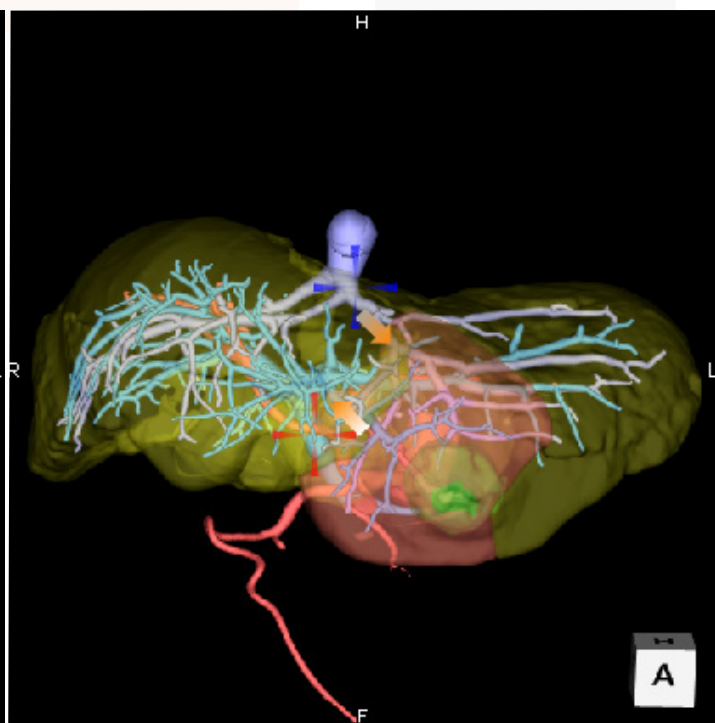
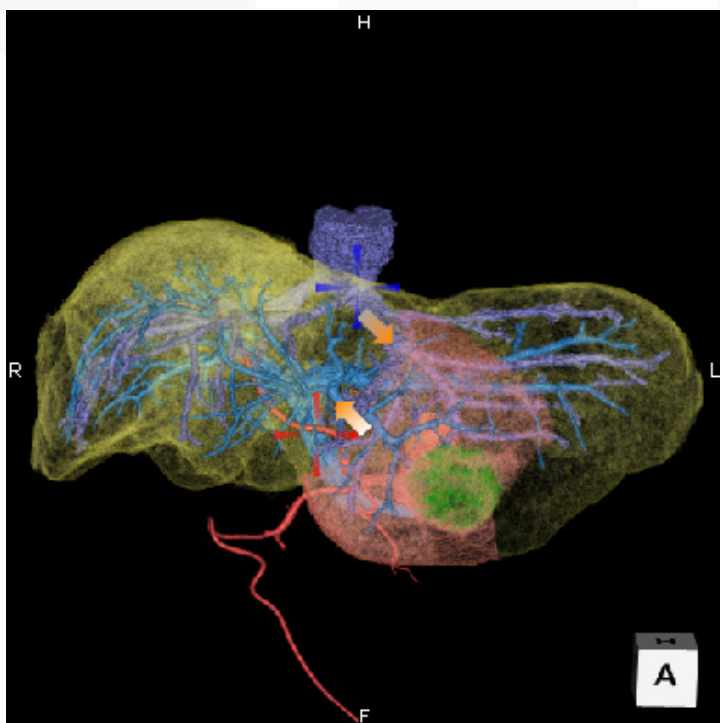
Respiratory

### Key features:

- Fully automatic segmentation of the liver
- Segmentation of right and left lobes
- Segmentation of regions based on portal vein anatomy
- Automated and semi-automated tools for rapid segmentation of arterial, venous and portal structures
- Rigid and non-rigid data registration options
- All segmented volumes can be viewed individually or in combination
- Volume or surface rendering of all segmented structures

Orthopedics

Abdominal



#### Japan Office

1-4-28 Mita, Minato-ku, Tokyo, 1080073, Japan  
Tel: +81 3 5427 1903 <http://www.zio.co.jp>

#### US Office

1301 Shoreway Road, #325, Belmont, CA 94002-4105, USA  
Tel: +1 650 413 1300 <http://www.ziosoftinc.com>