

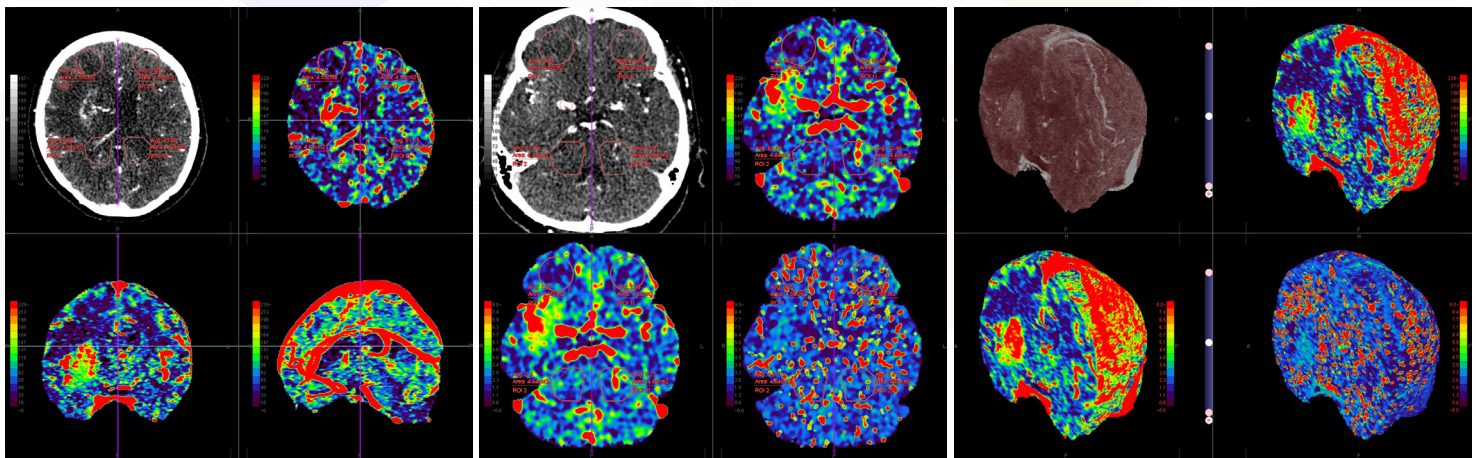
CT Volume Perfusion

COLOR MAPS RENDERED IN SLICES OR VR IMAGES

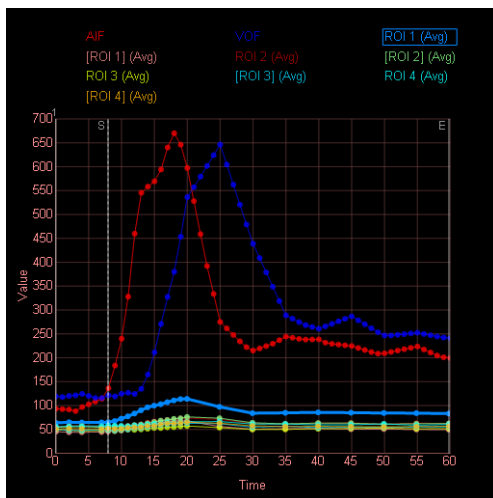
Analyze full volumetric CT data for standard perfusion indices, using several algorithms to view three maps at a time. Single Compartment method (with Fv, Tau and R2 maps) is available for use in the torso, and standard and block-circulant methods (with BF, BV, MTT and Tmax maps) are available for brain studies.

Key features:

- Automated or manual AIF / VOF identification and selection
- Calculations complete within seconds
- Coronal, Sagittal, Axial or MPR presentation selectable
- Volume rendered data presentation with oblique cut planes
- Multiple algorithms available for use



View a single map in ACS views, multiple maps in the same slice or VR images.



ROI (Area)	Image	Average	SD	Max	Min
ROI 1 (455.08)	Original	55.26	17.93	122	-2
	BF_sSVD	43.57	25.65	127.63	0
	BV_sSVD	1.92	0.85	4.86	0.47
	MTT_sSVD	6.02	6.13	25	1.29
[ROI 1] (455.08)	Original	61.88	17.89	132	8
	BF_sSVD	63.05	32	232.98	6.08
	BV_sSVD	2.49	1.24	7.8	0.66
	MTT_sSVD	3.32	2.73	19.56	1.09
ROI 2 (484.23)	Original	51.63	21.03	128	-18
	BF_sSVD	63.43	28.16	162.07	2.03
	BV_sSVD	2.6	0.81	5.77	0.91
	MTT_sSVD	4.67	4.66	25	1.18
[ROI 2] (484.23)	Original	61.91	28.33	247	-8
	BF_sSVD	92.46	70.29	470	4.05
	BV_sSVD	3.72	2.56	14.52	0.88
	MTT_sSVD	3.52	3.5	25	1.15

Japan Office

1-4-28 Mita, Minato-ku, Tokyo, 1080073, Japan
Tel: +81 3 5427 1903 <http://www.zio.co.jp>

US Office

1301 Shoreway Road, #325, Belmont, CA 94002-4105, USA
Tel: +1 650 413 1300 <http://www.ziosoftinc.com>