

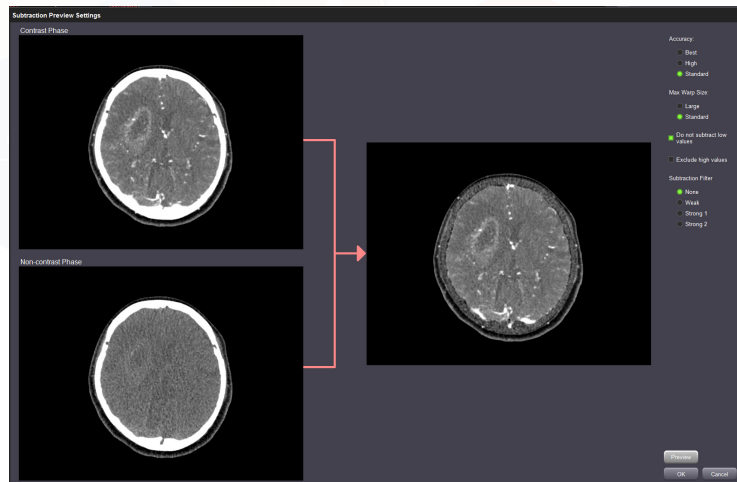
4D Subtraction

Take control of 4D volume datasets

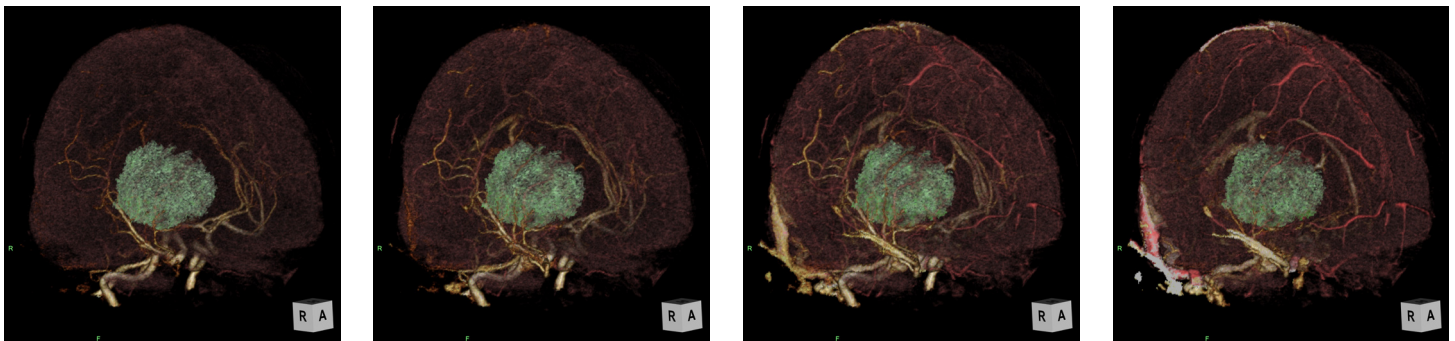
Creating image subtraction series from dynamic multiphase CT datasets is easy using the 4D Subtraction protocol in ZioStation. Removing bone and other high-density objects while creating a new series that can be used to visualize the anatomy in a true 4D sense, without an obstructed view makes vascular relationships come alive.

Key features:

- Loads complete volume flow vascular series for custom subtraction
- Preview subtraction before finalizing new series
- Adjustable settings and filters for optimal subtraction
- High-precision deformable registration
- Auto pre-processing ready
- Use the subtraction series in other advanced post-processing protocols



Subtraction preview



Subtraction series loaded into ZioStation's 4D protocol