

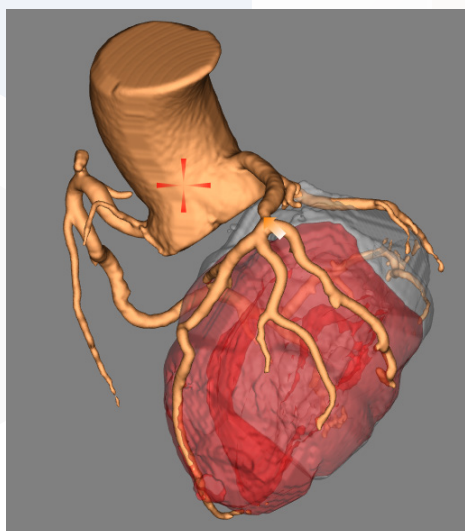
CT Coronary Territories

Quantify myocardial volumes by coronary segment

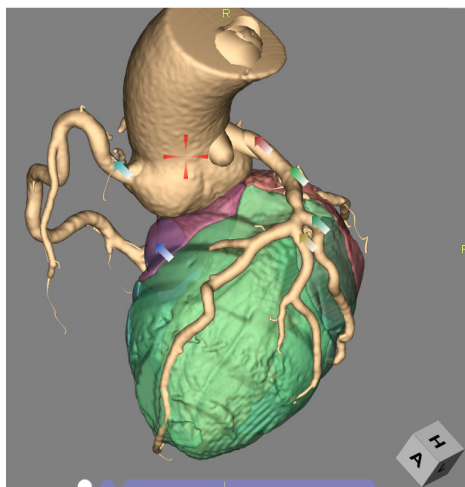
Using standard CT Coronary Angiographic acquisitions, this protocol allows for measurement of coronary circulation to myocardium segmentation.

Key features:

- Automatic segmentation of the coronary tree and myocardium
- Segmentation calculations for volume of each area
- 2-segment and multi-segment application



Mask	Volume	%
Whole Myocar.	208cc	100.0%
SegA	107cc	51.6%
SegB	101cc	48.4%
----	0cc	0.0%
----	0cc	0.0%
----	0cc	0.0%
LV Lumen	73cc	
Coronary	15cc	
Coro. & Ao	76cc	



Mask	Volume	%
Whole Myocar.	208cc	100.0%
■ Seg1	56cc	27.0%
■ Seg2	24cc	11.6%
■ Seg3	26cc	12.6%
■ Seg4	24cc	11.6%
■ Seg5	39cc	18.7%
■ Seg6	28cc	13.3%
■ Residual	11cc	5.2%
Selected	208cc	100.0%
Unselected	0cc	0.0%
LV Lumen	73cc	

Japan Office

1-4-28 Mita, Minato-ku, Tokyo, 1080073, Japan
Tel: +81 3 5427 1903 <http://www.zio.co.jp>

US Office

1301 Shoreway Road, #325, Belmont, CA 94002-4105, USA
Tel: +1 650 413 1300 <http://www.ziosoftinc.com>