

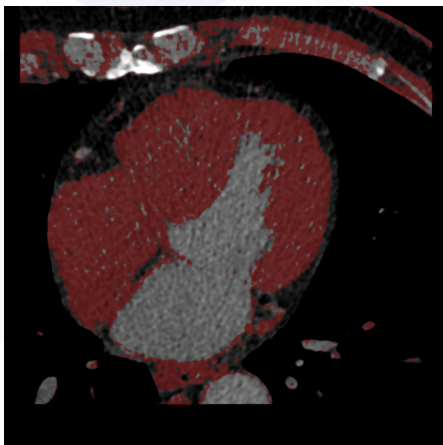
CT Dual kV Analysis

Create images from multi-kVp datasets

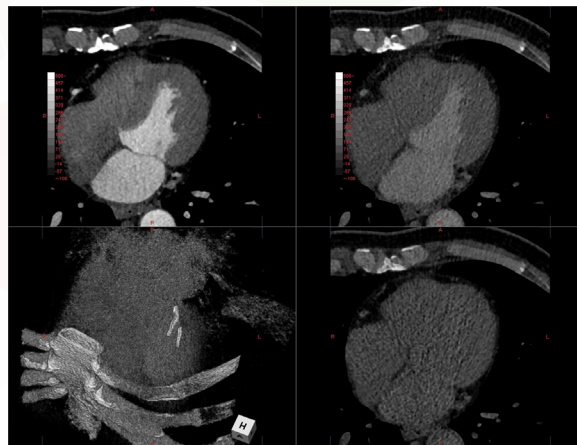
Using CT data acquired at two different energy levels, it is possible to create masks to remove bone and other visual obstructions from the CT studies. This also creates the ability to measure HU attenuation factors to determine material decomposition. Additionally, images can also be created from the multi-kVp datasets, including virtual non-contrast, energy subtraction, and image blending.

Key features include:

- Graphical histogram for viewing the desired energy level and extracting objects.
- Specify ROIs directly on the graph and save mask information.
- Easily create virtual non-contrast and multi-kV blended images.
- Separate energy structures for masking or bone removal.



2-material decomposition



Virtual non-contrast image



Energy subtraction

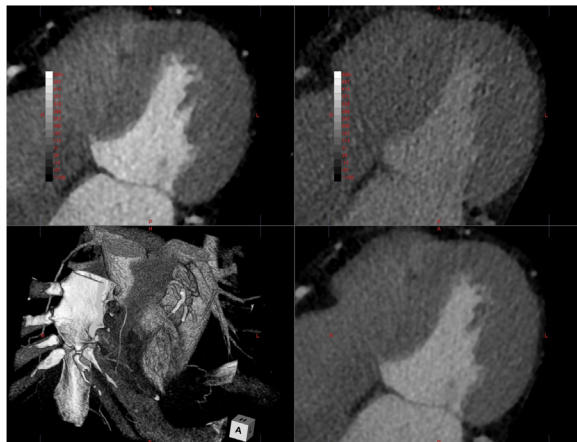


Image blending

Japan Office

1-4-28 Mita, Minato-ku, Tokyo, 1080073, Japan
Tel: +81 3 5427 1903 <http://www.zio.co.jp>

US Office

1301 Shoreway Road, #325, Belmont, CA 94002-4105, USA
Tel: +1 650 413 1300 <http://www.ziosoftinc.com>