

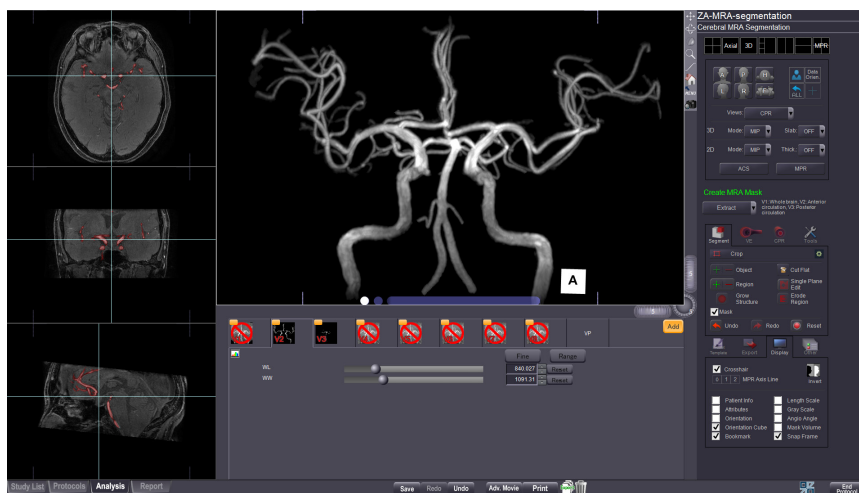
Cerebral MRA Segmentation

Automatic segmentation of vessels for fast image post-processing

This protocol enables visualization of cerebral MRA data using automatic extraction of vessels and brain parenchyma. Additional segmentation tools are provided for advanced post-processing to analysis and review cerebral vessels.

Key features:

- Automatic recognition of brain vessel anatomy
- Automatic segmentation of major vessels for MIP rendering
- 1-click segmentation of brain parenchyma
- Shortens workload and post-processing time for cerebral vessel analysis



Japan Office

1-4-28 Mita, Minato-ku, Tokyo, 1080073, Japan
Tel: +81 3 5427 1903 <http://www.zio.co.jp>

US Office

1301 Shoreway Road, #325, Belmont, CA 94002-4105, USA
Tel: +1 650 413 1300 <http://www.ziosoftinc.com>