

# CT Calcium Scoring

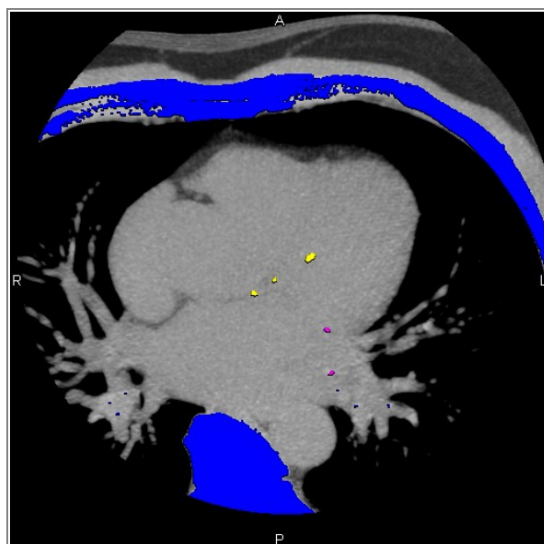
## Rapid Determination of Calcium Score

The Calcium Scoring application's intuitive tools quantify potential coronary calcification for evaluation of disease risk. Individual arteries can be identified to evaluate the calcium burden per artery and total score (Agatston or custom scoring). The output is a report quantifying calcific lesions in the coronary arteries and includes volume score, minimum, maximum and average Hounsfield Units (HU) per artery and total, and key images.

### Key features:

- Concurrent linked display of calcium analysis and original image
- Configurable threshold settings support lower dose scans
- Semi-automated identification and labeling of calcified regions
- Automatic tabulation of Agatston scores, volumes and densities
- Configurable calcium score density ranges

Referring Physician	<input type="text"/>	Reading Physician	<input type="text"/>				
Facility Name	<input type="text"/>						
CategoryID	# of Voxels	Volume [mm <sup>3</sup> ]	Min [HU]	Max [HU]	Average [HU]	SD	Agatston
LM	0	0.00	0	0	0.00	0.00	0.00
LAD (3)	106	49.78	130	554	242.28	103.19	60.55
LCX (4)	68	10.49	130	224	145.69	20.80	15.64
RCA (1)	8	1.01	139	166	153.00	9.35	1.47
Total	182	61.29	130	554	202.27	92.67	77.67



### Japan Office

1-4-28 Mita, Minato-ku, Tokyo, 1080073, Japan  
Tel: +81 3 5427 1903 <http://www.zio.co.jp>

### US Office

1301 Shoreway Road, #325, Belmont, CA 94002-4105, USA  
Tel: +1 650 413 1300 <http://www.ziosoftinc.com>