

# CT Colon Analysis

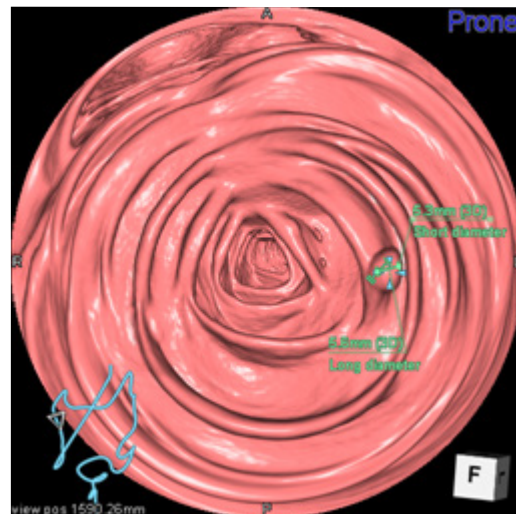
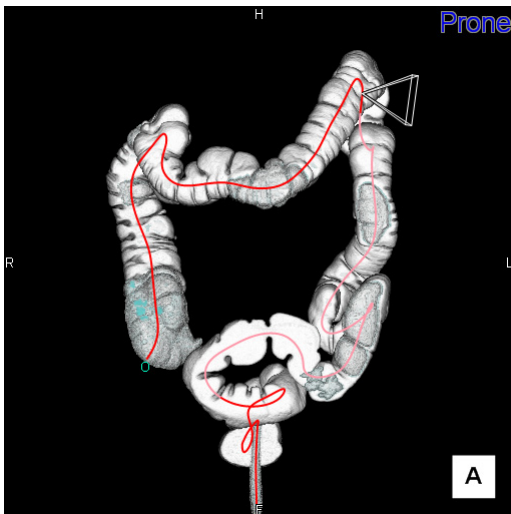
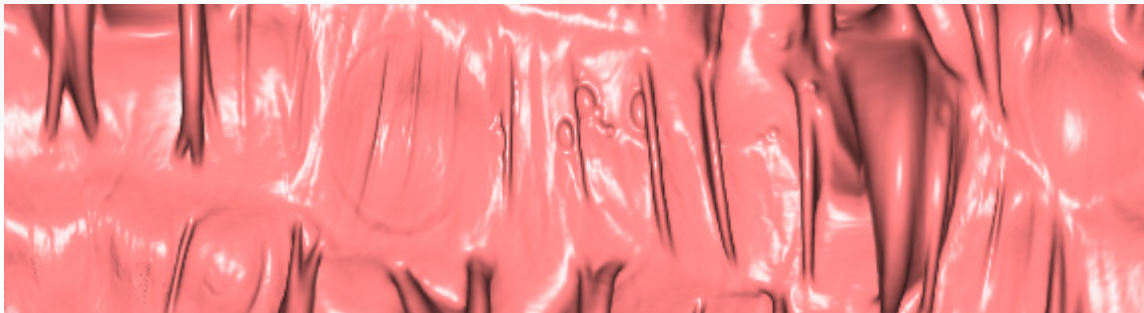
## EFFICIENT AND INTUITIVE VIRTUAL COLONOSCOPY

Use single or dual position series (with linkable features) of a prepared colon to quickly display virtual colonoscopy images in a number of formats. After automatic extraction of the colon centerline, display images for review in a virtual scope view, in a "filet" view (unfolded and virtually dissected to present as a long rectangle), or in volume-rendered views as a solid surface or transparent structure.

Polyp measurements can be made with semi-automatic or manual tools, and captured with comments and key/summary images to a detailed report page.

### Key features:

- Simultaneous review of dual position scans
- Automatic colon segmentation and centerline path extraction
- High-precision digital cleansing function
- Synchronized 3D, MPR, filet and virtual endoscopic view with fish-eye aperture option
- Measurement tools such as dimensions of polyp and distance along centerline from rectum
- Multiple layouts to support individual reading styles and workflows
- Mark, measure and capture key images for structures of interest, then include in an automatically compiled report



### Japan Office

1-4-28 Mita, Minato-ku, Tokyo, 1080073, Japan  
Tel: +81 3 5427 1903 <http://www.zio.co.jp>

### US Office

1301 Shoreway Road, #325, Belmont, CA 94002-4105, USA  
Tel: +1 650 413 1300 <http://www.ziosoftinc.com>