

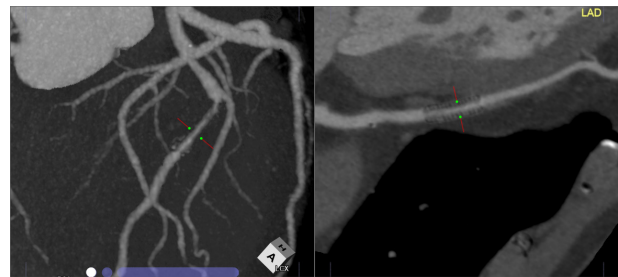
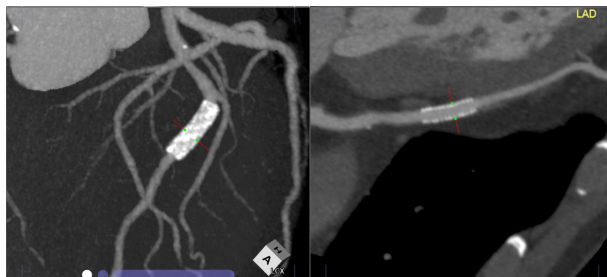
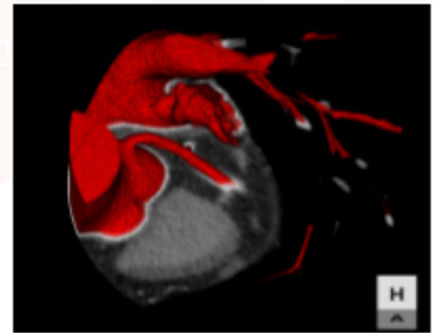
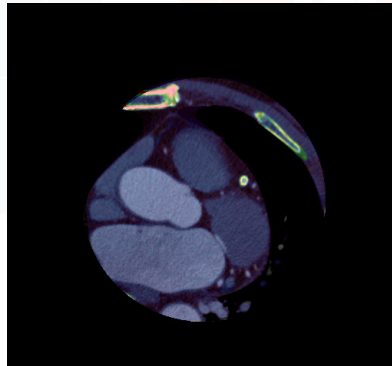
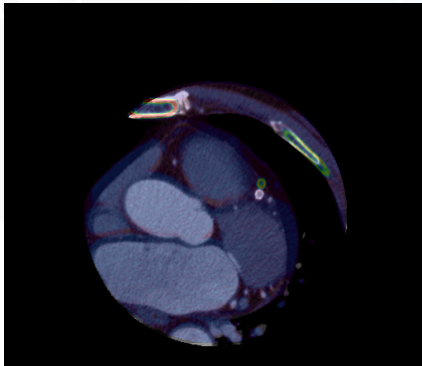
# CT Coronary Calcium Subtraction and CT Coronary Compare

Coronary artery calcium or high-density subtraction with high-precision deformable registration

Together these protocols provide optimal visualization of coronary vessel lumen without the interference of heavy serpentine calcification or post-stent placement. Once subtraction is complete, the CT Coronary Compare protocol provides visualization of both pre- and post-subtraction images.

## Key features:

- Non-rigid registration automatically resolves alignment between contrast and non-contrast exams
- Automated vessel path for both the pre-subtraction and subtraction images
- All of the measurement and reporting tools available in our Coronary Analysis protocols are available in CT Coronary Compare



## Japan Office

1-4-28 Mita, Minato-ku, Tokyo, 1080073, Japan  
Tel: +81 3 5427 1903 <http://www.zio.co.jp>

## US Office

1301 Shoreway Road, #325, Belmont, CA 94002-4105, USA  
Tel: +1 650 413 1300 <http://www.ziosoftinc.com>