

CT/SPECT Cardiac Fusion

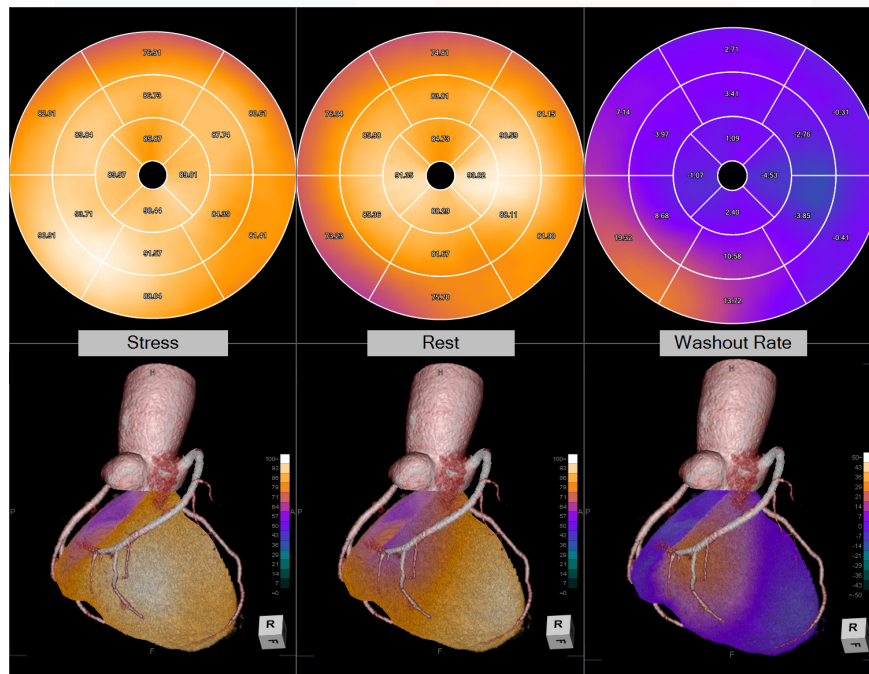
Functional and Anatomical Data Synergy

High-definition 3D image fusion of SPECT and CT data are available in just a few steps with the CT/SPECT Cardiac Fusion protocol. Load one CT and two MR series, register the data, and with just a click analyze for both Reversibility and Washout Rate. Extraction of the LV surface and coronary tree is automatic, as are all calculations and analysis.

Data review is quick, and efficiently presented with layered VR views and the parametric overlays.

Key features:

- Automatic extraction of myocardium and coronary arteries
- Fusion images reveal SPECT imaging in the context of coronary and aortic anatomy
- Stress and Rest phases can be displayed simultaneously for either Reversibility or Washout Rate color map display
- Polar maps and VR images are simultaneously displayed to improve the efficiency of interpretation



Comparison of stress vs. rest, with washout rate displayed

Japan Office

1-4-28 Mita, Minato-ku, Tokyo, 1080073, Japan
Tel: +81 3 5427 1903 <http://www.zio.co.jp>

US Office

1301 Shoreway Road, #325, Belmont, CA 94002-4105, USA
Tel: +1 650 413 1300 <http://www.ziosoftinc.com>