

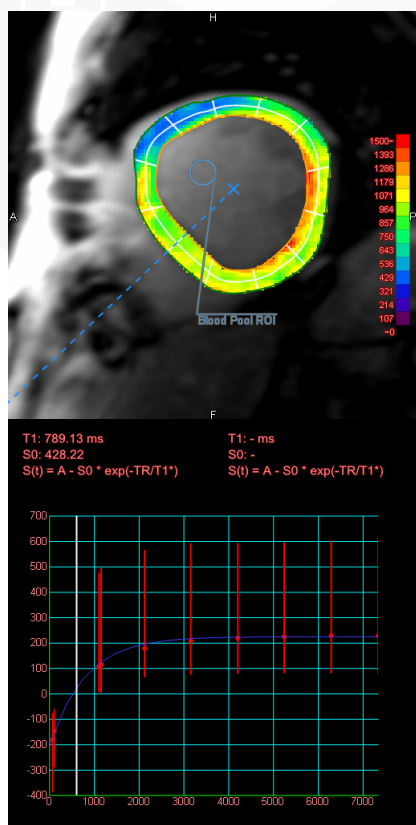
MR Myocardial T1 Mapping

QUICK INDICATOR FOR MYOCARDIAL ECV

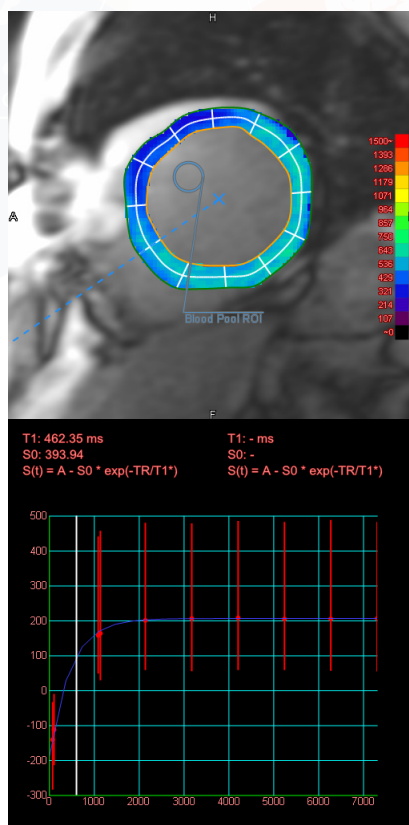
Using MR data with and without contrast and with different inversion times, this protocol extracts inner and outer contours of the LV, then displays parametric color maps of T1 values as well as extracellular volume (ECV) calculated from blood T1 and hematocrit values. T1 mapping may reflect the degree of tissue infarction, and ECV is thought to be an indicator of myocardial fibrosis.

Key features:

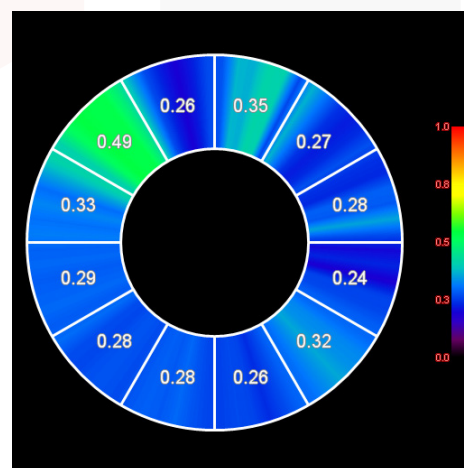
- Rapid T1 mapping of the myocardium
- Polar ECV map for analysis of myocardial fibrosis
- Graphically presented T1 data and curves
- Selectable for endocardial, epicardial, or transmural ECV value display.



Pre-contrast



Post-contrast



Polar map of ECV

Japan Office

1-4-28 Mita, Minato-ku, Tokyo, 1080073, Japan
Tel: +81 3 5427 1903 <http://www.zio.co.jp>

US Office

1301 Shoreway Road, #325, Belmont, CA 94002-4105, USA
Tel: +1 650 413 1300 <http://www.ziosoftinc.com>